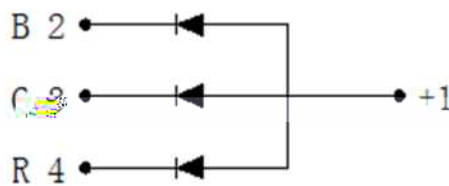
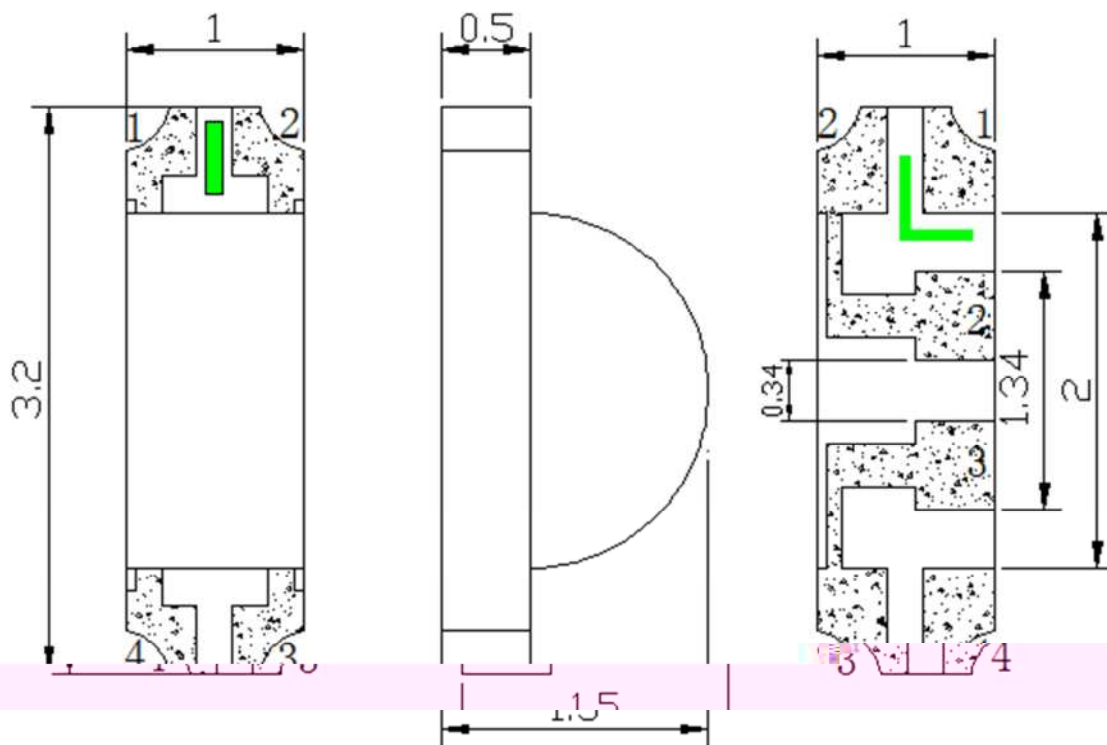




### Features

- ◆ Pb free product—RoHS compliant
- ◆ Low power consumption, High efficiency
- ◆ Reliable and rugged
- ◆ High luminous intensity
- ◆ Long life – solid state reliability
- ◆ Viewing angle: 120°(R/G/B)

### Package Dimension



Part No.	Lens Color	Source Color
SL-T3210RGBC020-L150	Water Clear	Red/Green/Blue

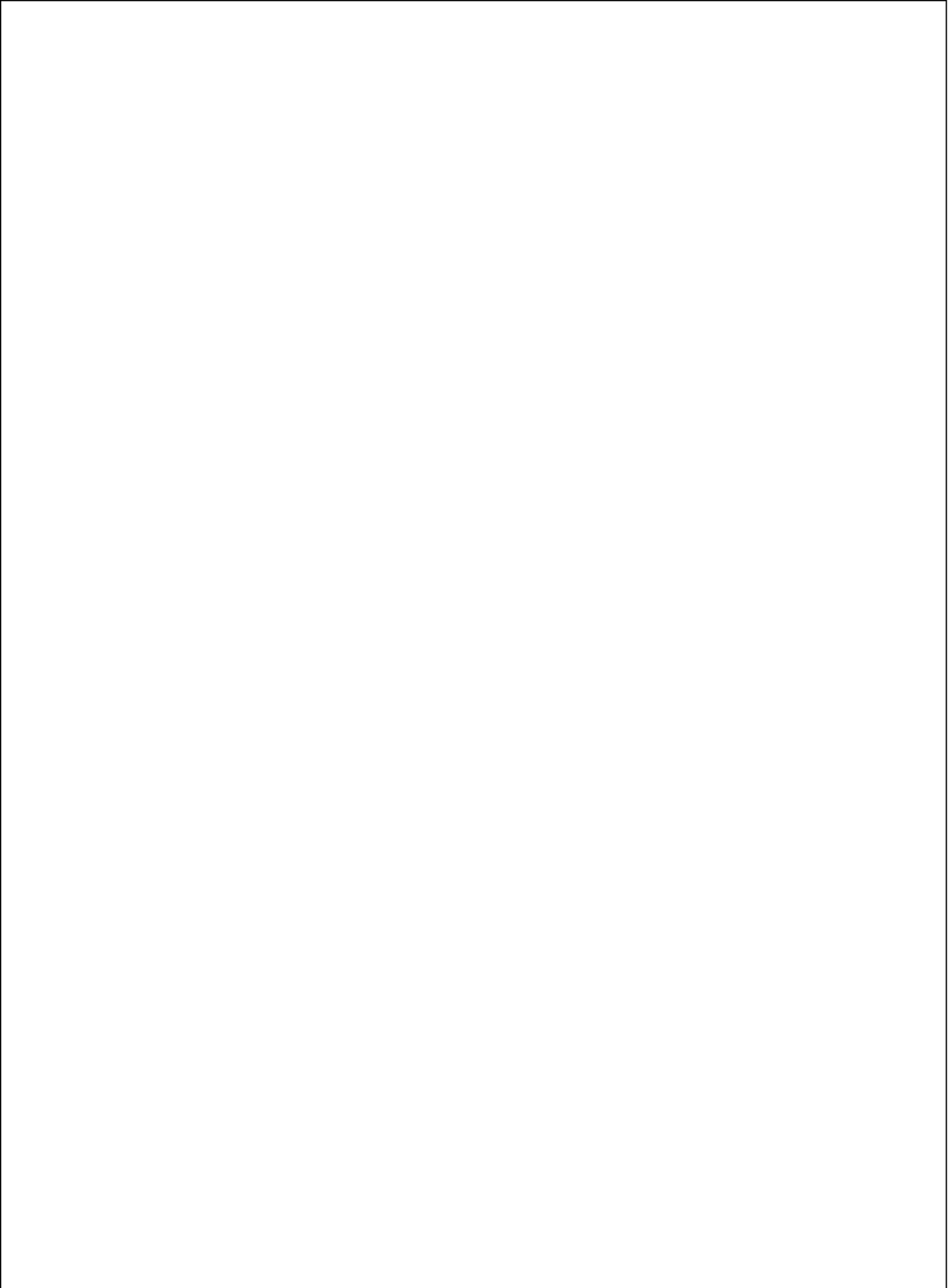
#### Notes:

1. All dimensions are in millimeters.
2. Tolerance is  $\pm 0.10\text{mm}$  unless otherwise noted.
3. Specifications are subject to change without notice.




LIGH

LIGHT ELECTRONICS CO., LTD.

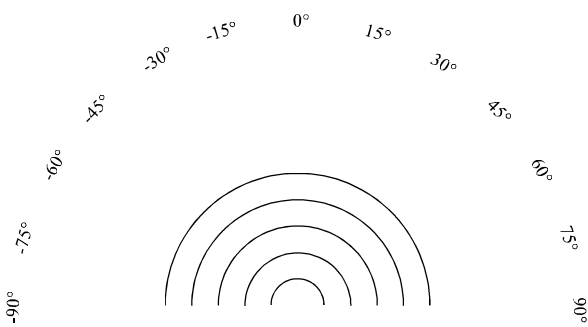


--	--	--	--

--	--

--

--

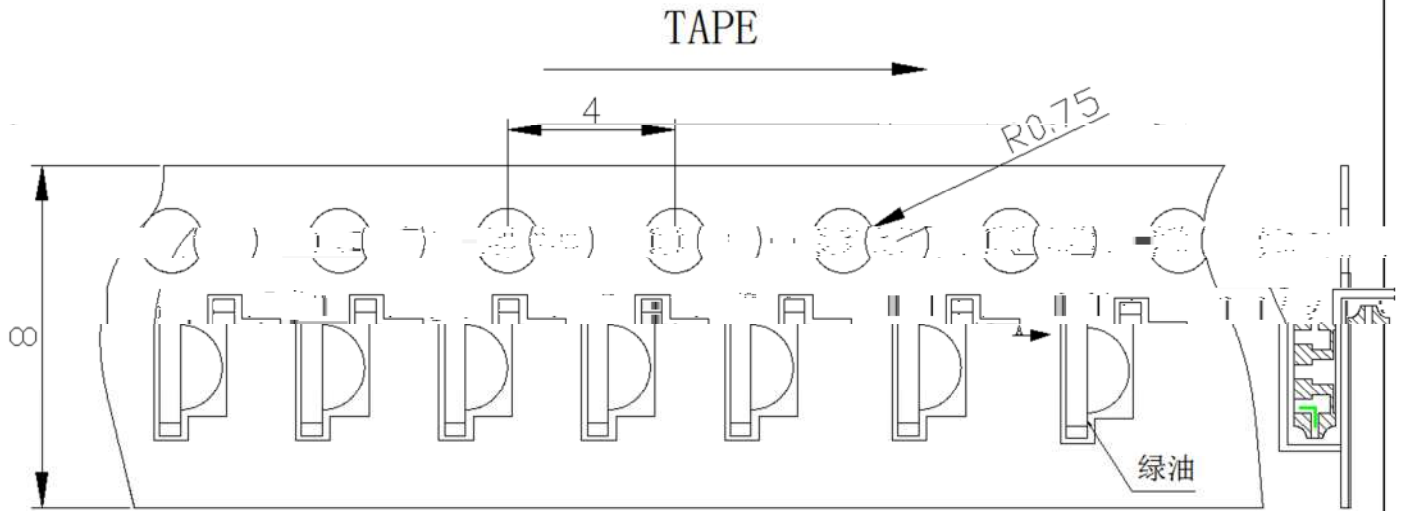
 <p>The diagram shows a semi-circular arc with concentric lines inside it. The arc is divided into segments by degree markings: -90°, -75°, -60°, -45°, -30°, -15°, 0°, 15°, 30°, 45°, 60°, 75°, and 90°. The markings are placed along the perimeter of the semi-circle.</p>
---

--

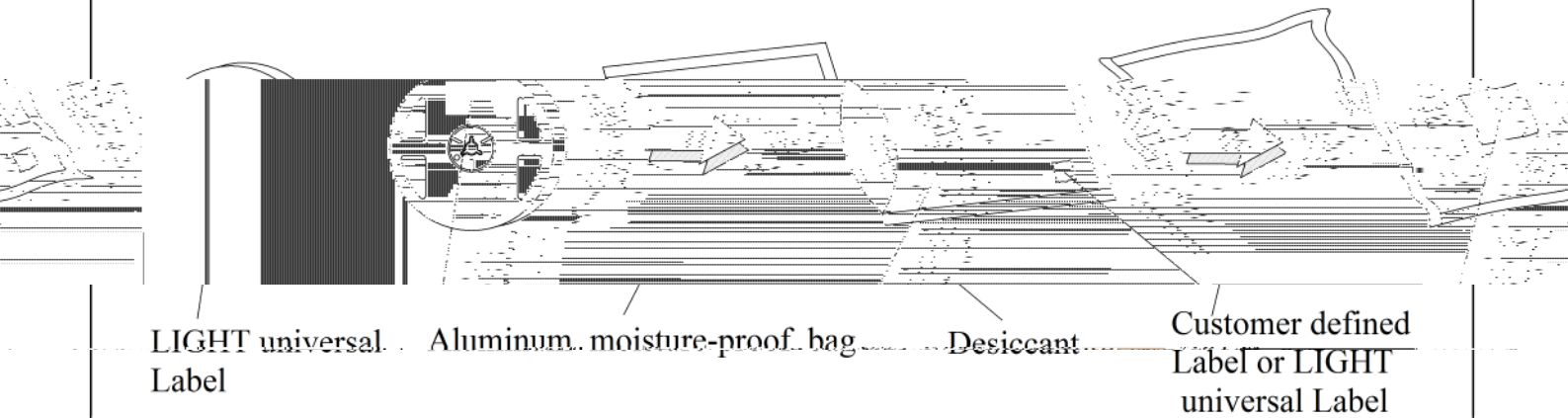
--	--	--	--



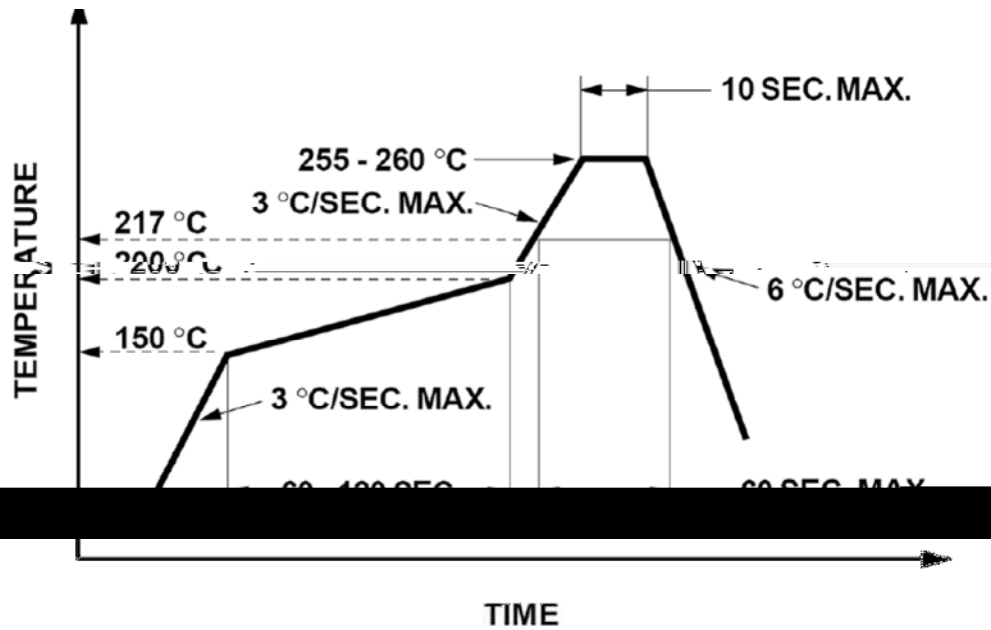
**Carrier Tape Specifications(Loaded Quantity: 3000pcs/reel)**



**Moisture Resistant Packaging**



## Suggest IR Reflow Condition For Lead Free



1. Reflow soldering should not be done more than two times.
2. When soldering, do not put stress on the LEDs during heating.

### Soldering iron

1. When hand soldering, the temperature of the iron must less than 300 °C for 3 seconds.
2. The hand solder should be done only once.

### Repairing

Repair should not be done after the LEDs have been soldered. When repairing is unavoidable, a double-head soldering iron should be used (as below figure). It should be confirmed beforehand whether the characteristics of LEDs will or will not be damaged by repairing.

